

Heraeus Kulzer

Mitsui Chemicals Group

GLUMA® Desensitizer

More gain, less pain.



GLUMA®



GLUMA® Desensitizer – The solution against hypersensitivity.

For more than 20 years now, one drop of GLUMA is all you have needed to stop, and prevent, hypersensitivity.

Its effectiveness has been proven in over 50 million restorations:

- Effective reduction of dentine hypersensitivity.
- Easy to use.
- No agitation or light curing.
- Compatible with all bonding and restorative materials.

Giving a hand to oral health.

GLUMA® Desensitizer – Easily applied – widely applicable.

How it works

Desensitises:

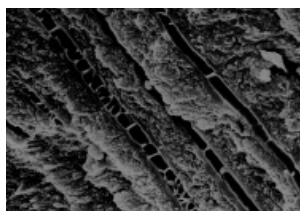
GLUMA is the only desensitiser proven to penetrate exposed dentinal tubuli up to 200 µm¹. The result is the formation of multiple layers of protein septa that prevent intertubular fluid movements due to osmotic changes.

Inhibits bacteria growth colonisation:

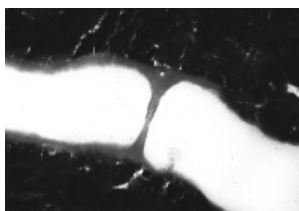
GLUMA provides a hermetic seal that acts as a microbial barrier, inhibiting bacterial growth colonisation.

Re-wet:

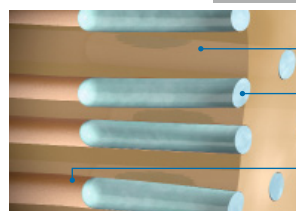
GLUMA resurrects collapsed collagenous fibres, improving the bond strength of many adhesives.



SEM of GLUMA-induced septa in dentinal tubuli.¹



SEM magnification of a single GLUMA-induced septum in dentinal tube.¹



Schematic representation of effect.

Indications:

For the reduction or elimination of pain caused by hypersensitivity in exposed cervical areas that do not require restorations, and of dentine sensitivity after preparation of teeth to receive fixed prosthesis or restorations.

Specific use for doctors and hygienists

Doctor – Under every restoration

Use GLUMA below every restoration – direct and indirect – to ensure your patients the comfort they deserve.

- Below crowns.
- Below bridges.
- Below inlays and onlays.
- Below veneers and temporaries.
- Margins around temporary crowns.
- Below all direct restorations.

Dental hygienist – Spot desensitise

With the confidence of GLUMA, your patients will appreciate the fast, effective and long-term desensitising results for a more comfortable prophyl.

Tooth sensitivity caused by:

- Cervical erosions.
- Exposed dentine surface (e.g. by abrasion, etc.).
- Exposed dentine caused by gingival recession.

Application guide GLUMA® Desensitizer



Order no.	Article
65872354	GLUMA® Desensitizer 1 x 5 ml Bottle
66001854	GLUMA® Desensitizer 40 x 0.075 ml Single Doses

Order no.	Article
66018221	GLUMA® Desensitizer Value Pack 3 x 5 ml Bottles
66001938	Application Brushes 100 Pieces

¹ Schüpbach P *et al.*: Closing of dentinal tubules by Gluma Desensitizer. Eur J Oral Sci 105, 1997: 414-421.